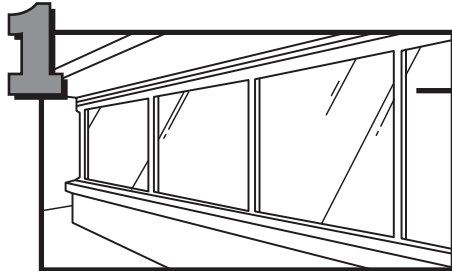




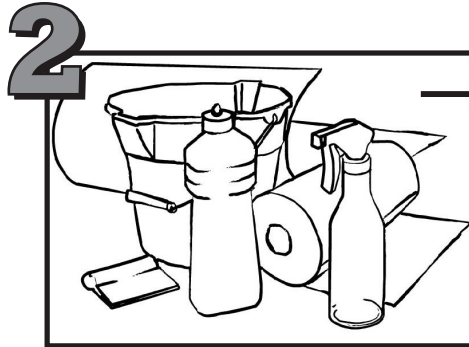
WINDOW CLING INSTALLATION INSTRUCTIONS

PLAN 2 PEOPLE TO INSTALL CLINGS

FOR OPTIMUM DECAL PERFORMANCE, PLEASE REVIEW THE FOLLOWING TIPS FOR APPLYING STATIC CLING VINYL TO WINDOWS.

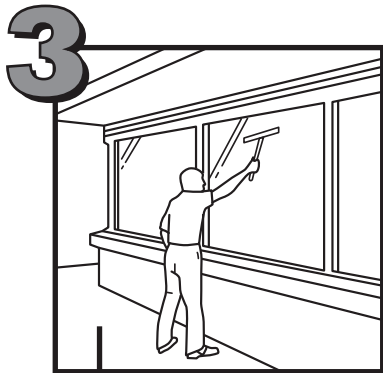


Review Schematic for proper Window Cling placement.

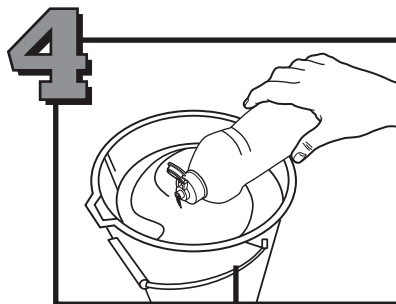


MATERIALS NEEDED:

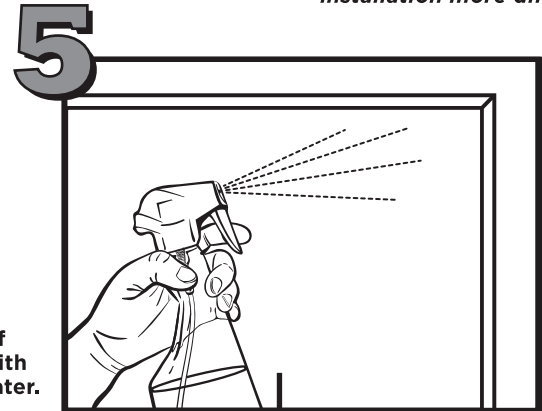
- Window Clings
 - Squeegee
 - 1 Gallon Bucket of Cold Water
 - Spray Bottle
 - Paper Towels
 - Liquid Dish Soap
- NOTE: Cleaner cannot be silicone based. Window cleaner will not work and may make installation more difficult*



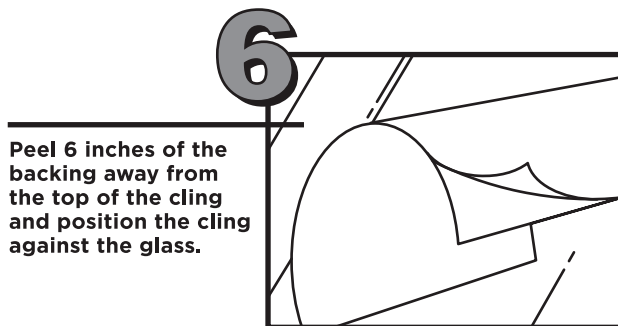
Clean and dry application surface with window cleaner and clean lint free soft cloth.



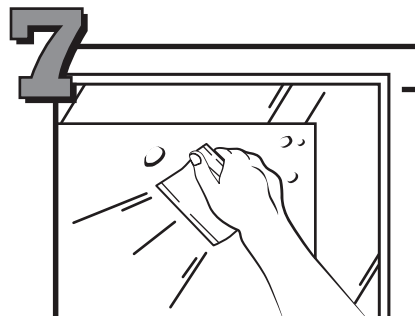
Mix 2 to 3 drops of liquid dish soap with 1 gallon of cold water.



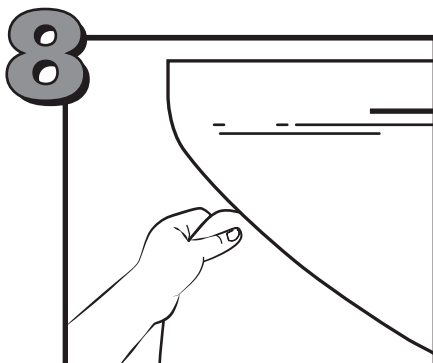
Fill spray bottle with soapy water and **GENEROUSLY WET** entire window so cling will slide as you move it into position.



Peel 6 inches of the backing away from the top of the cling and position the cling against the glass.



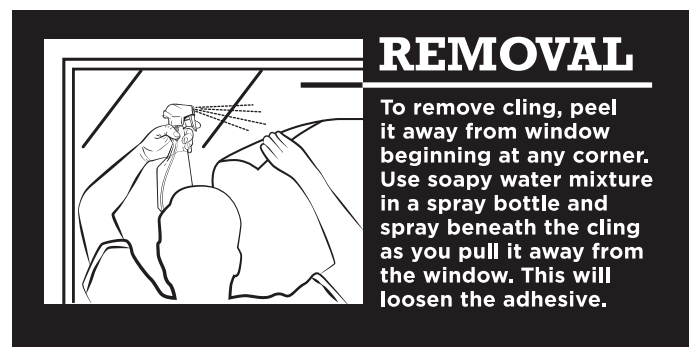
As one person peels the backing away from the cling, the other person should use the squeegee to gently push out any excess water and/or air bubbles, moving from the center of the cling to the outer edge.



Continue to pull the backing downward off the cling while smoothing the cling with the squeegee. Use paper towels to blot excess water off windows and rub all edges of cling to insure adhesion. If air bubbles occur, puncture with pin or needle and smooth down with squeegee.

REPEAT PROCESS FOR REMAINING CLINGS.

After 24 hours, the windows may be washed, but do not use squeegee (it may scratch the ink off the cling).



REMOVAL

To remove cling, peel it away from window beginning at any corner. Use soapy water mixture in a spray bottle and spray beneath the cling as you pull it away from the window. This will loosen the adhesive.